

Marathon of the Treasure Coast 2018

RELAY OVERVIEW



Relay Rules

1. ONE member of your team must attend a **MANDATORY** safety briefing prior to the race on Expo day. Briefings will happen at Noon, 2pm and 4pm.
2. There is one category for relay teams for the 2018 race: OPEN CATEGORY with the only requirement of 2-4 members per team. There are no age or gender specifications for teams.
3. Transitions must happen at the specific relay transfer chutes. If team members transfer at any other location along the course they will be disqualified.
4. Teams may assign the relay legs to their members in any order they prefer. Once members have assigned legs please email the information to relay@treasurecoastmarathon.com or bring a list to packet pick up for accurate timing.
5. Runners must arrive at their assigned exchange point approximately 30 minutes prior to the arrival of the “active” team member.
6. The relay course takes place along active roadways. Pay attention to local law enforcement and course marshal safety directives at all times. Use crosswalks and obey all pedestrian laws when going to the transition chutes.
7. Team vehicles must be driven in a prudent and cautious manner for the safety of all runners. Any team vehicle driving above posted speed limits or driving in an unsafe manner will result in team disqualification.
8. If possible, one vehicle per team on the course. Your vehicles must be legally parked in a public parking space at each of the transfer sites when dropping off and picking up team members. Display Event parking plaque appropriately on dashboard. No transportation will be provided.



The following information details each exchange point and helps assist in making your transitions as smooth as possible. The map views show the running routes. The satellite views show the parking locations and paths to the exchange points.

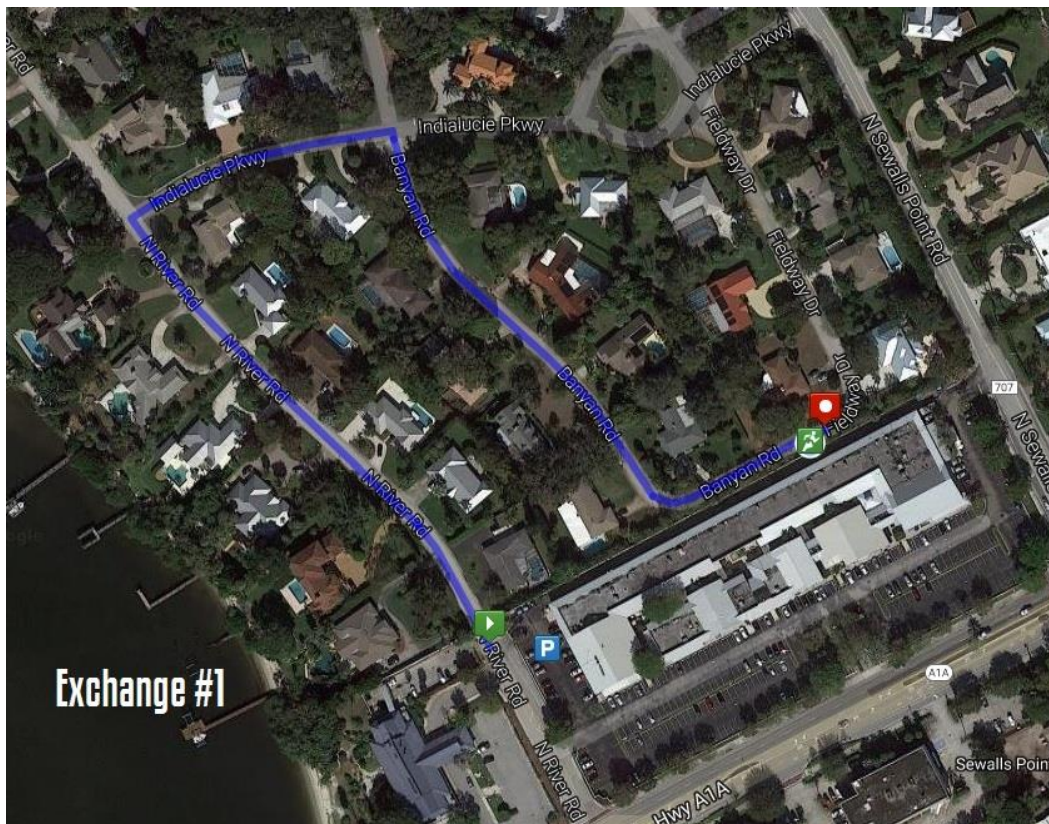
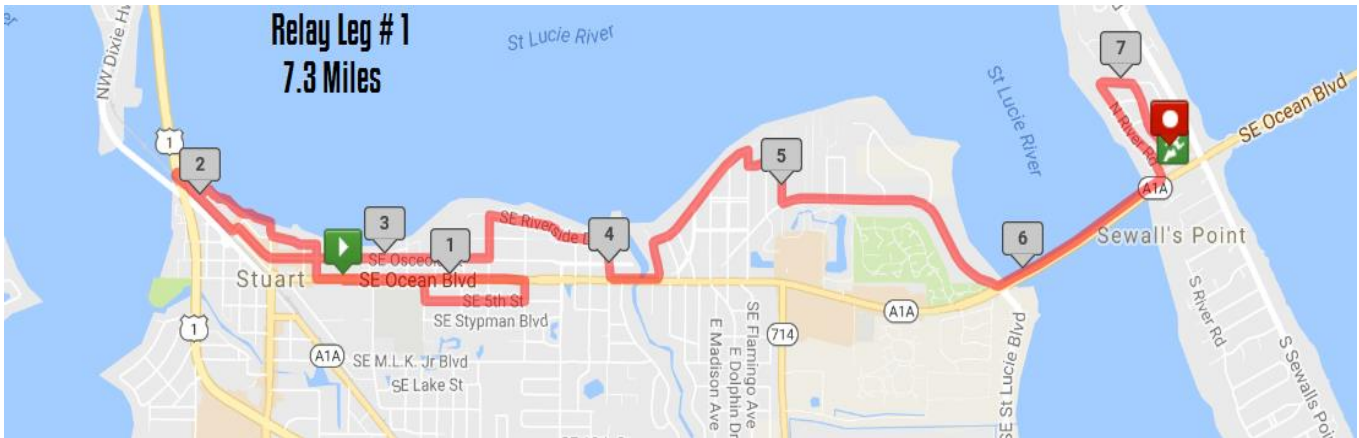
Leg 1 – 7.3 Miles

Start: Memorial Park to 2 Banyan Rd Stuart, FL

Parking for Start of Leg 1: 300 SE Ocean Blvd Stuart FL 34994

Parking for End of Leg 1: Harbour Bay Plaza 3766 SE Ocean Blvd Sewall's Point FL 34969
(West side of Andres Hair Salon)

Note: There will be a .4 mile walk to get to exchange from parking area. Information provided at safety Briefing.

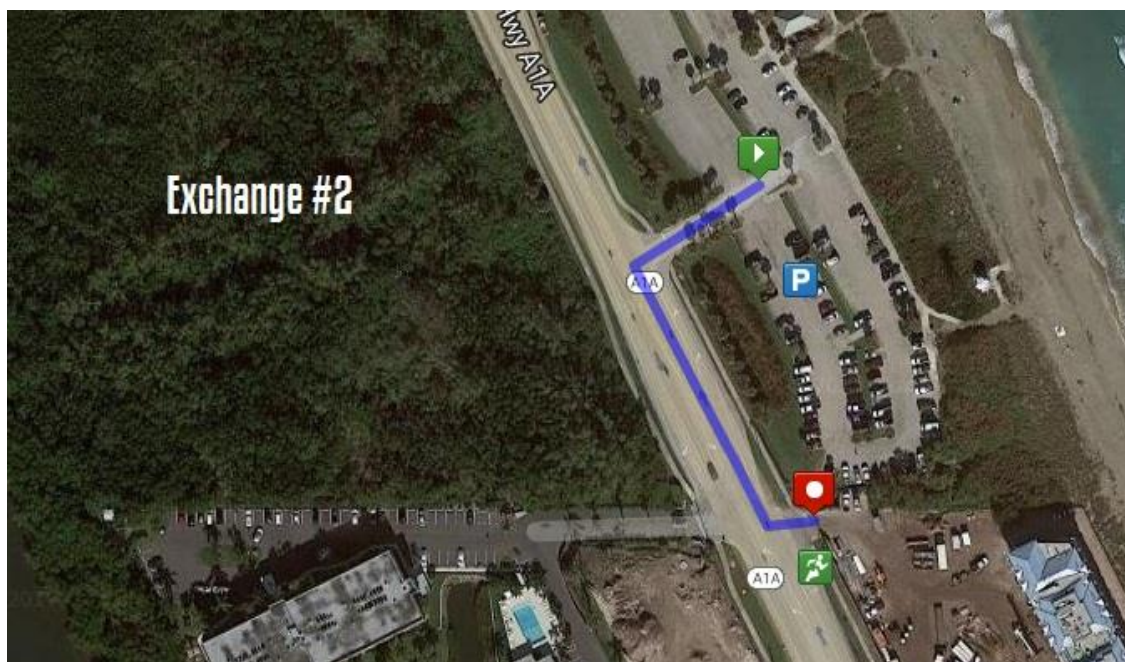
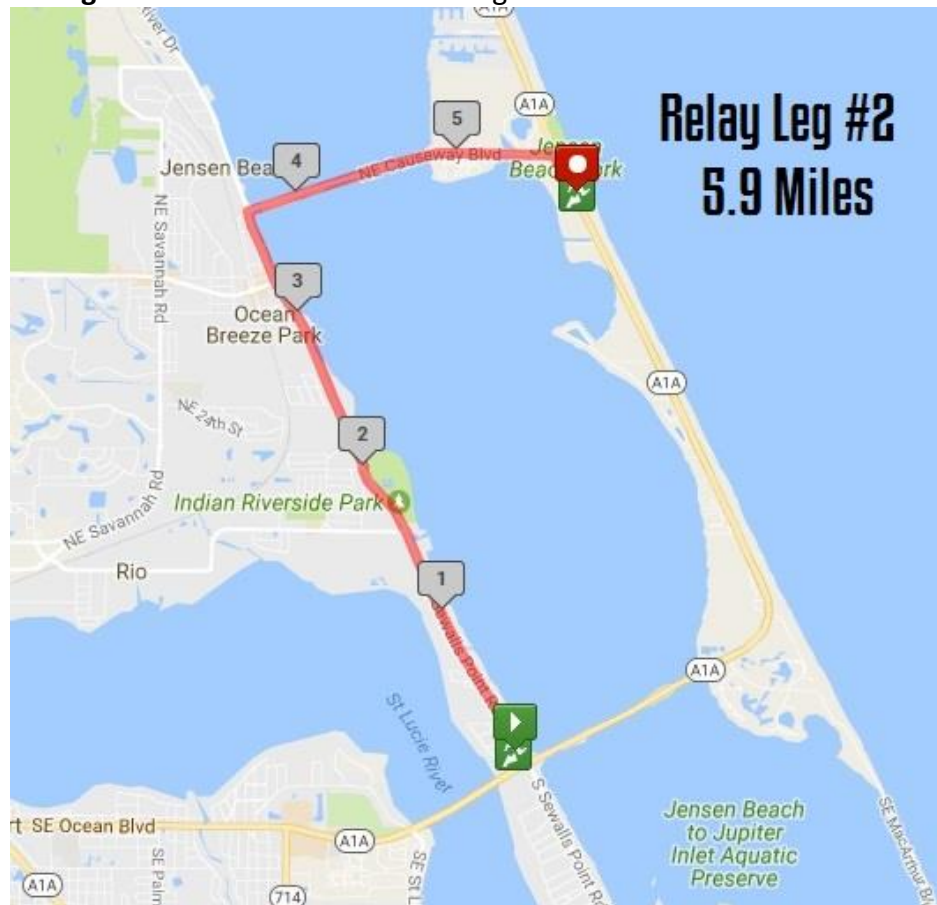


Leg 2 – 5.9 Miles

2 Banyan Rd Stuart, FL to 3792 NE Ocean Blvd Jensen Beach

Parking for Start of Leg 2: Harbour Bay Plaza 3766 SE Ocean Blvd Sewall's Point FL 34969
(West side of Parking lot near Andres Hair Salon)

Parking for End of Leg 2: Jensen Beach Public Parking Lot



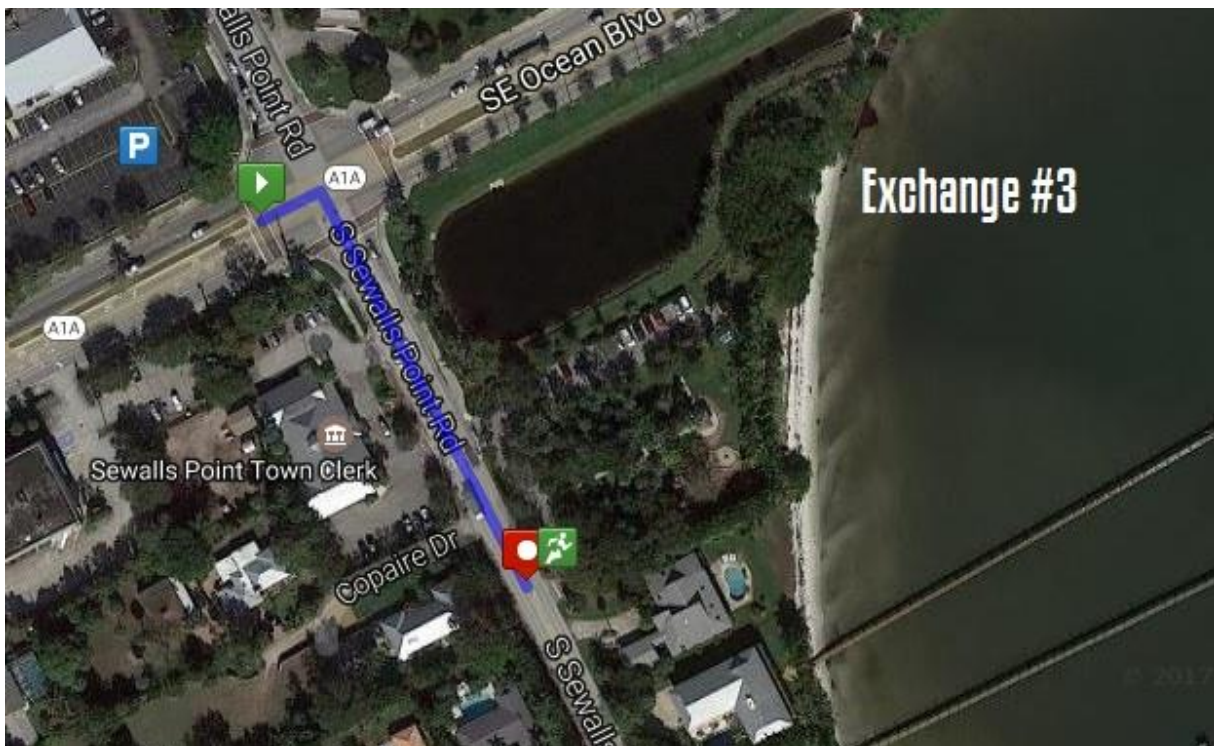
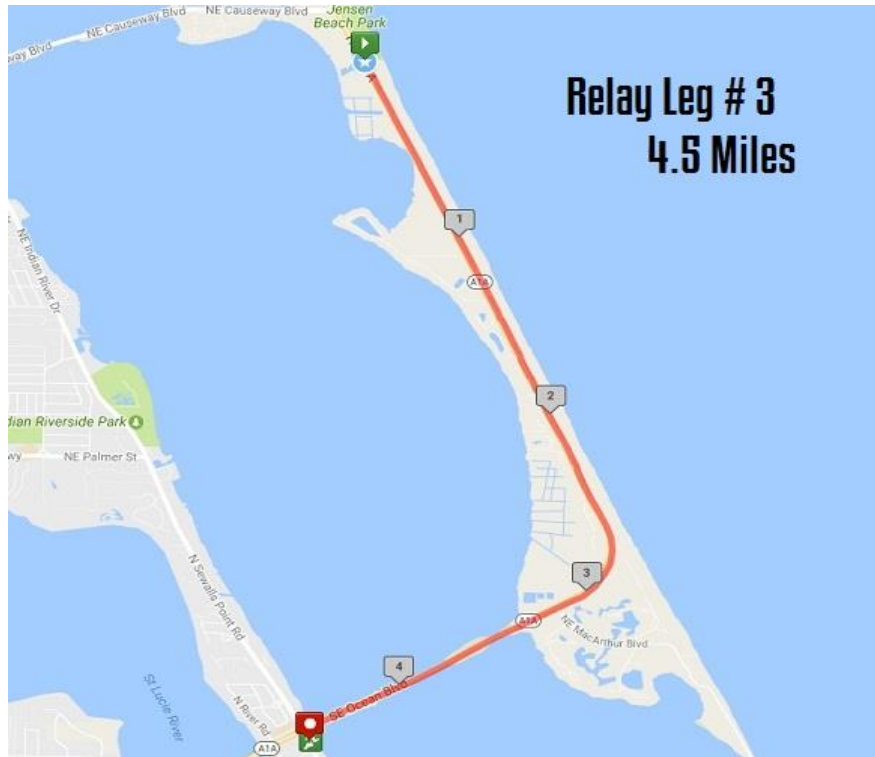
Leg 3 – 4.5 Miles

3792 NE Ocean Blvd Jensen Beach to 1 Sewall's Point Road, Sewall's Point FL

Parking for Start of Leg 3 Jensen Beach Public Parking Lot

Parking for End of Leg 3: Harbour Bay Plaza 3766 SE Ocean Blvd Sewall's Point FL 34969

(East End of Parking Lot)

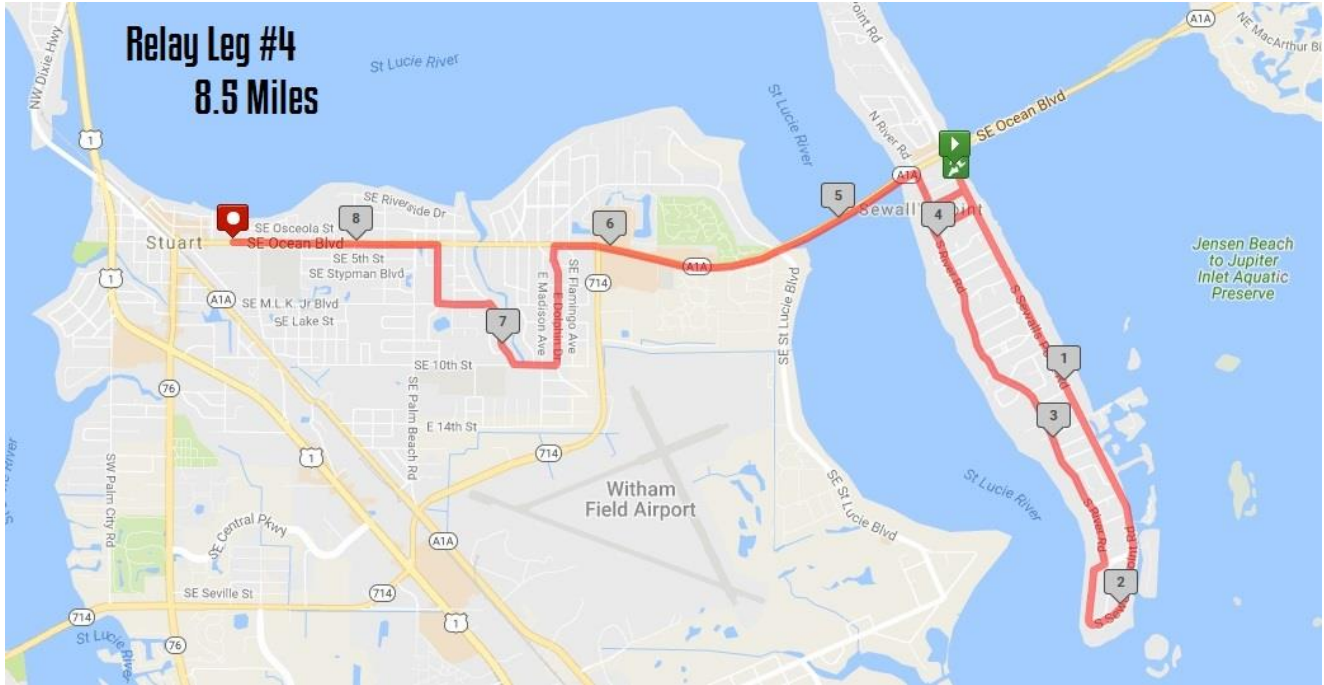


Leg 4 – 8.5 Miles

1 Sewall's Point Road Sewall's Point, FL to Memorial Park

Parking for Start of Leg 4: Harbour Bay Plaza 3766 SE Ocean Blvd Sewall's Point FL 34969

Parking at Finish Line: 300 SE Ocean Blvd Stuart FL 34994



Run for a Reason!

Teams may partner with one of our local, national, or international beneficiaries. For more information about any of the charities we officially support visit: <https://www.treasurecoastmarathon.com/run-for-charity/run-for-charity-overview/>.

Awards

Team awards for the three fastest teams and top three charity fund-raising teams.

